

Metalux
Product Selection Guide

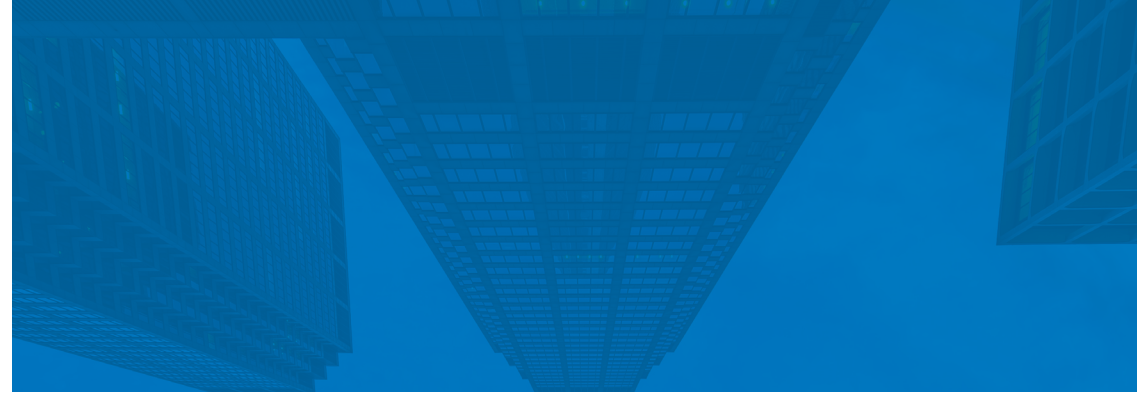


Metalux

Celebrating 50+ years, Metalux offers an extensive line of LED lighting products including recessed, linear and industrial fixtures.

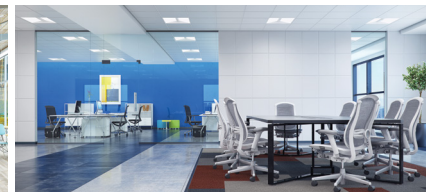
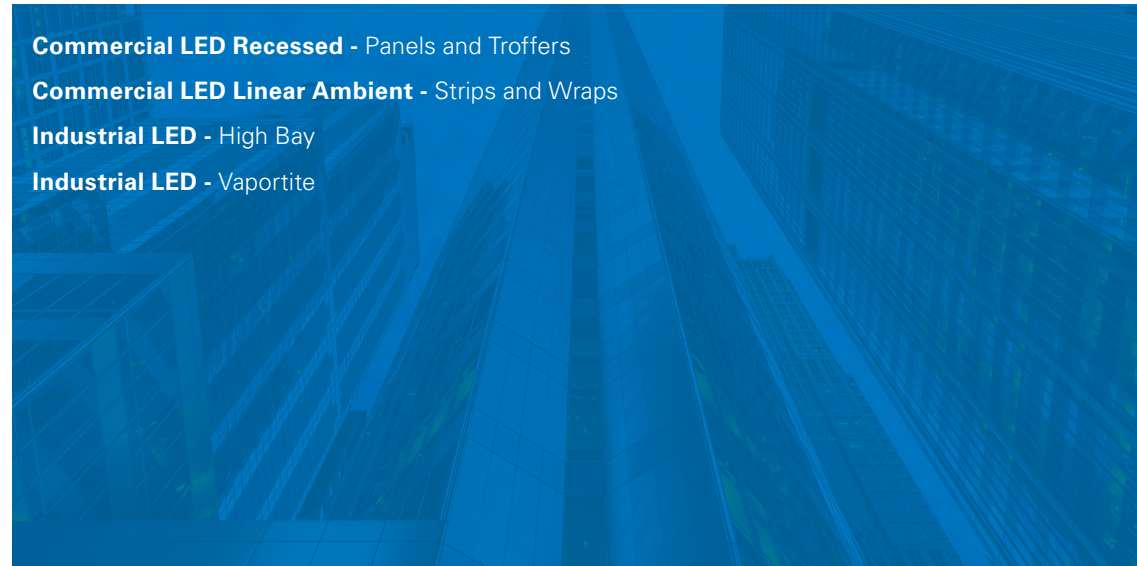
Metalux's complete family of luminaires are dedicated to the latest solid state lighting and driver technology for optimal performance and energy efficiency.

Metalux delivers innovation, quality, product availability, and responsiveness all with an affordable value proposition.



The product selection guides are simple yet powerful tools to help assist with product comparisons and selection based on features, performance and value.

- 2-3 Commercial LED Recessed** - Panels and Troffers
- 4-5 Commercial LED Linear Ambient** - Strips and Wraps
- 6 Industrial LED** - High Bay
- 7 Industrial LED** - Vaportite



Good

Click on products to learn more



		Backlit CGT	Backlit CGTS ²	Edgelit FP	Edgelit FPS	Backlit MMS	Backlit CGTX	Edgelit FPX	Backlit CGSB	Surround SFS
APPLICABILITY ¹	Education	★★★	★★★	★★★	★★★	★★★	★★★	★★★	★★★	★★★
	Office	★★	★★	★★	★★★	★★★	★★★	★★★	★★	★★★
	Healthcare	★	★★	★	★	★★	★★	★★	★★★	★★
	Retail	★★	★★	★★★	★★★	★★★	★★★	★★★	★★	★★★
FEATURES / PERFORMANCE	Sizes	1x4, 2x2, 2x4	1x4, 2x2, 2x4	1x4, 2x2, 2x4	1x4, 2x2, 2x4	1x1, 1x2, 6"x4, 1x4, 2x2, 2x4	1x4, 2x2, 2x4	1x4, 2x2, 2x4	1x4, 2x2, 2x4	1x2, 1x4, 1x8, 2x2, 2x4
	lm/W (Max)	115	159	136	120	145	137	130	140	149
	Lum (Max)	5,300	6,900	7,000	6,500	6,200	10,000	6,400	9,300	8,500
	Life (@60K)	L84	L86	L86	L87	L82	L88	L87	L86	L88
	Lens	Frost, Smooth	Frost, Smooth	Frost, Smooth	Frost, Smooth	Frost, Smooth	Frost - Smooth, Prismatic	Frost, Smooth	Frost, Smooth	Frost, Smooth
	Service from Below	No	No	No	No	Yes in Surface Mount	No	No	Yes	No
	Emergency	Remote	Remote	Remote	Remote	Integrated in Recessed Mount	Integrated	Integrated	Integrated	Remote
	CRI	80+	80+	80+ / 90+	80+	90+	80+ / 90+	80+	80+ / 90+	80+
	Sensor Location	Tile Mount	Tile Mount	Tile Mount	Tile Mount	Tile Mount	Integrated	Integrated	Integrated	Tile Mount
	DLC	Standard	Standard	Standard	Standard	Standard/Premium	Premium	Premium	Standard	Standard/Premium
	Door	No - see CGSB	No - see CGSB	No - see CGSB	No - see CGSB	No - see CGSB	No - see CGSB	No - see CGSB	Yes	No - see CGSB
	Air Venting	No	No	No	No	No	No	No	No	Standard
	Lumen / CCT Select	No	Yes	No	Yes	Yes	No	No	No	Yes
VividTune™	No	No	No	No	No	No	No	No	No	
INTEGRATED CONTROLS	WaveLinx LITE						✓	✓	✓	✓
	WaveLinx PRO						✓	✓	✓	✓

Notes: 1. ★★★ = high applicability, ★★ = medium applicability, ★ = low applicability, blank = non-applicable. 2. CGTS-NUV also available (Canadian market only).

Better

Best

Click on products to learn more



		Center Basket CBRK	Flat Lens GR	Center Basket Achieva ARS	Center Basket Cruze CZS	Cruze ST	Cruze SB	RLN	Ovation	Accord	SkyRidge	Encounter
APPLICABILITY ¹	Education	★★★	★★★	★★★	★★★	★★★	★★★	★★	★★	★	★	★★
	Office	★★	★★	★★	★★★	★★★	★★	★★★★	★★★★	★★★★	★★★★	★★★★
	Healthcare	★	★★	★★	★★	★★	★★★★	★★	★	★★	★★	★★★★
	Retail	★	★★	★★	★★★	★★★	★★	★★	★★★★	★★	★★	★★
FEATURES / PERFORMANCE	Sizes	1x4, 2x2, 2x4	1x4, 2x2, 2x4	1x4, 2x2, 2x4	1x4, 2x2, 2x4	1x4, 2x2, 2x4	1x4, 2x2, 2x4	1x4, 2x2, 2x4	1x4, 2x2, 2x4	1x4, 2x2, 2x4	1x2, 1x4, 2x2, 2x4	1x2, 1x4, 2x2, 2x4, Metric
	lm/W (Max)	168	140	146	156	157	157	139	109	127	150	141
	Lumens (Max)	4,700	18,000	8,000	6,500	17,000	7,500	8,000	5,000	7,300	6,400	7,400
	Life (@60K)	L85	L89	L90	L90	L90	L84	L93	L89	L89	L92	L92
	Lens	Frost, Ribbed	Frost, Prismatic	Round or Square Ribbed	Round or Square, Frost - Ribbed or Smooth, Perf Inlays	Round or Square, Frost - Ribbed or Smooth, Perf Inlays	Round, Frost - Ribbed or Smooth	Frosted Acrylic	Metal Perforated	Frosted Acrylic	Acrylic (WaveStream)	Acrylic (WaveStream)
	Service from Below	Yes	Yes	No	No	No	Yes	Yes	No	Yes	No	No
	Emergency	Integrated	Integrated	Integrated	Integrated	Integrated	Integrated	Integrated	Integrated	Integrated	Integrated	Integrated
	CRI	80+	80+	80+ / 90	80+	80+ / 90	80+ / 90	80+ / 90	80+	80+	80+	80+ / 90
	Sensor Location	Integrated	Integrated	Integrated	Integrated	Integrated	Integrated	Integrated	Tile Mount	Integrated	Integrated	Integrated
	DLC	Premium	Standard / Premium	Standard / Premium	Standard / Premium	Standard / Premium	Premium	Premium	Standard	Premium	Premium	Premium
	Door	No	Yes	No - see Cruze SB	No - see Cruze SB	No - see Cruze SB	Yes	No	No	No	No	No
	Air Venting	Yes	No	No	Yes	Yes	No	No	Yes	Yes	Yes	Yes
Lumen / CCT Select	Yes	Yes	Yes	Yes	Yes	No	Yes	No	No	Yes	No	
VividTune™	No	Tunable White	No	No	Tunable White	Tunable White	Tunable White	No	No	No	Tunable White	
INTEGRATED CONTROLS	WaveLinx LITE	✓	✓	✓	✓	✓	✓	✓	✓	✓	✓	✓
	WaveLinx PRO	✓	✓	✓	✓	✓	✓	✓	✓	✓	✓	✓

Notes: 1. ★★★ = high applicability, ★★ = medium applicability, ★ = low applicability, blank = non-applicable

Good

Better

Best

Click on products
to learn more



		SLES ²	ST	ST2 DIM	SLSTP	SSRK Retrofit	SNX	SRL
APPLICABILITY ¹	Education	★★	★	★★	★★★	★	★★★	★★★
	Office	★	★	★★	★★★	★	★★★	★★★
	Healthcare				★	★	★★	★★
	Retail	★★★	★	★★	★★	★★★	★★★	★★★
	Industrial	★★	★★	★★	★★	★★★	★★★	★★★
	Residential		★★★		★★			
FEATURES / PERFORMANCE	Length	4', 8'	2', 4', 8'	2', 4', 8'	2', 4', 8'	4', 8'	2', 4', 8'	4', 8'
	lm/W (Max)	167 (8ft)	108	122	148	159	176	149
	Lum (Max)	8,700	9,200	9,200	11,900	8,000 / 4 ft.	22,000	11,000
	Life (@60K)	L70/50K ³	L70/50K	L70/50K	L70/50K	L94	L87	L82
	Dimming	N/A	No	0-10V	Triac or 0-10V	0-10V	0-10V, Step, Dali	0-10V, Step, Dali
	Lens	None ⁴	White, Single or Dual Lens	White, Dual Lens	Diffuse, Poly	Frost, Acrylic	Open, Round, FDL, Square, Refl	Frost, Acrylic
	Emergency	Integrated	None	Integrated	Integrated	Integrated	Integrated	Integrated
	CRI	80+	80+	80+	80+	80+	>80 / 90	80+
	Sensor Location	Remote	Remote	Remote	Sensor Kit	N/A	Integrated	Integrated
	DLC	Standard (TLED Lamps only)	Standard	Standard	Standard	Premium	Premium	Premium
	Lumen / CCT Select	No	No	CCT	CCT/Lumen	No	Yes, specific lumen only	No
INTEGRATED CONTROLS	Basic Occupancy				✓	✓	✓	✓
	Stand Alone Daylight / Occupancy					✓	✓	✓
	WaveLinx Lite						✓	✓
	WaveLinx						✓	✓
	DLVP							✓

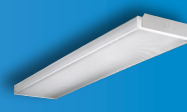
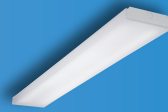
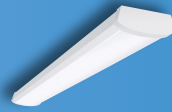
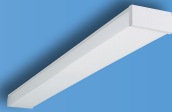
Notes: 1. ★★★ = high applicability, ★★ = medium applicability, ★ = low applicability, blank = non-applicable. 2. w/T8 LED lamps included. 3. TLED lamp tested to B50 L70 requirement. LED lifetime means the length of time (in hours) until half of the LED light sources maintain at least 70% of their initial lumen output (B50, L70). 4. TLED CorePro lamp is glass tube. TLED MasterClass lamp is shatter resistant plastic.

Good

Better

Best

Click on products
to learn more



		WP	NWS	WNLED	WSNLED	BCLED	AWS / AWWS	SWLED
APPLICABILITY ¹	Education	★★	★★★	★★★	★★	★★	★★★	★★★
	Office	★	★★	★★	★★★	★	★★★	★★★
	Healthcare	★	★	★	★★	★★	★★	★
	Retail	★	★★	★	★★★	★	★★★	★
	Industrial	★	★★	★★			★	★★
	Residential	★★★		★	★	★	★★	
FEATURES / PERFORMANCE	Sizes	2' and 4', 5.1" wide	2', 4' / 5.3" wide	2', 4'	2', 4'	2', 4'	2', 4', 8' / 5.5" & 10" Wide	4'
	lm/W (Max)	114	129	118	108	120	165	150
	Lum (Max)	3,400	4,900	5,000	6,500	4,800	13,000	8,000
	Life (@60K)	L70/50K	L82	L88	L87	L82	L90	L91
	Lens	Prismatic Acrylic	Diffuse, Acrylic	Frost, Acrylic	Frost + Film, Acrylic	Frost, Smooth	(Vandal Resistant) Ribbed Frost, Polycarb	(Vandal Resistant) Frost, Acrylic
	Emergency	No	Remote	Integrated	Integrated	Integrated	Integrated	Integrated
	CRI	80+	80+	80+	80+	80+	80+, 90+	80+
	Row Mount	N/A	Yes	Yes	Yes	Yes	Yes	No
	Sensor Location	N/A	Integral, Microwave	N/A	N/A	N/A	Integrated	Integrated
	DLC	Standard	DLC, Title 24 Non-Res	Standard	Standard	None	DLC, Title 24 Res	Standard
Lumen / CCT Select	No	CCT/Lumen	No	No	No	CCT/Lumen	No	
INTEGRATED CONTROLS	Basic Occupancy		✓				✓	✓
	Stand Alone Daylight / Occupancy						✓	✓
	WaveLinx Lite						✓	✓
	WaveLinx						✓	✓
	DLVP							

Notes: 1. ★★★ = high applicability, ★★ = medium applicability, ★ = low applicability, blank = non-applicable

Good

Better

Best

Click on products to learn more



		LHBS	SPHB	VHB	UHBS	CZL	Steeler	OHB(L)	Benchmark
APPLICABILITY ¹	Big Box Retail	★	★★★	★	★★	★★★	★★	★★★	★
	Sports / Recreation	★★	★★	★★	★★	★	★★★	★★★	★★
	Warehouses	★★★	★★★	★★★	★★	★★	★★★	★★★	
	Manufacturing	★★	★★	★★	★★	★	★★★	★★★	★★★
	Cold Storage	★	★★	★★★	★	★	★	★★★	★★
	Large Indoor		★	★			★★	★★★	★★
	Complex Environments			★	★★		★		★★★
FEATURES / PERFORMANCE	Lumen Range	12,000 - 36,000	9,000 - 60,000	9,000 - 48,000	12,000 - 36,000	5,000 - 32,000	9,000 - 30,000	9,000 - 100,000	12,000 - 70,000
	Selectable	Lumens/CCT	Lumens/CCT	Lumens	Lumens/CCT				
	Efficacy (Max)	160 lm/W	172 lm/W	164 lm/W	165 lm/W	176 lm/W	152 lm/W	205 lm/W	181 lm/W
	CRI	80	70, 80, 90	70, 80, 90	80	80, 90	80	70, 80, 90	70, 80
	Distribution	M	N, M, W	N, W	M	Multiple	N, M, W	N, M, W	N, M, W
	Sizes	13", 14.2", 19.7"	18", 26", 42"	< 2'	13"/15" Dia	4', 8'	17" Dia	Scalable	17", 25" Dia
	Housing ²	CRS / Diecast	CRS	CRS / Extruded	Diecast	CRS	CRS / Diecast	CRS	Diecast
	Lensing	Acrylic	Polycarbonate	Polycarbonate	Polycarbonate	Multiple	Polycarbonate	Acrylic	Acrylic
	Uplight	None	Optional	None	None	Optional	Up to 10%	None	None
	Life (@ 60K hrs)	L85	L88	L83	L91	L89	L88	L96	L92
	Ambient Range	-20C to 50C	-40C to 55C	-40C to 55C	-40C to 50C	-40C to 65C	-40C to 55C	-40C to 55C	-40C to 65C
	Emergency	Rapid Response	Integrated	Remote	✓	Integrated	Remote	Integrated	Remote
	Ratings	Damp	Damp	Damp	IP65	Damp	IP65 Optics	Damp	IP66
DLC	Premium	Premium	Standard, Premium	Premium	Premium	Premium	Premium	Premium	
INTEGRATED CONTROLS	Basic Occupancy	Rapid Response		✓		✓	✓	✓	✓
	Stand Alone Daylight / Occupancy	✓	✓	✓	✓	✓	✓	✓	✓
	WaveLinx	✓	✓	✓		✓	✓	✓	✓
	Enlighted ³		✓	✓		✓	✓	✓	✓

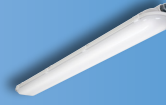
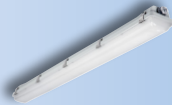
Notes: 1. ★★★ = high applicability, ★★ = medium applicability, ★ = low applicability, blank = non-applicable
 2. CRS=Cold-rolled Steel, Extruded=Extruded Aluminum, Diecast=Diecast Aluminum.
 3. Location data for asset tracking.

Good

Better

Best

Click on products to learn more



		APVT-S	VT2	VT3	VT4S	VT4
APPLICABILITY ¹	Canopy	★★	★★	★★		
	Storage	★★★	★★★	★★		
	Parking Garage	★★	★★	★★★		
	Warehouse	★★	★★★	★★★	★	★
	Food Processing	★★	★★	★★★	★★	★★
	Manufacturing		★★	★★	★★★	★★★
	Complex Environments		★		★★★	★★★
FEATURES / PERFORMANCE	Lumen Range	3,000 - 11,600	2,000 - 22,000	2,000 - 8,000	9,000 - 18,000	9,000 - 30,000
	Selectable	Lumens / CCT	N/A	Lumens / CCT	N/A	N/A
	Efficacy (Max)	151 lm/W	150 lm/W	154 lm/W	165 lm/W	146 lm/W
	Distribution ²	G	G, W	G, W, P	G	G
	Sizes	4', 8'	2', 4', 8'	2', 4'	2'	4'
	Housing	Polycarbonate	Fiberglass/Polyester	Fiberglass/Polyester	Fiberglass	Fiberglass
	Lensing	Polycarbonate	DR Acrylic or Polycarb	DR Acrylic or Polycarb	DR Acrylic or Polycarb	DR Acrylic or Polycarb
	Wet Location	Yes	Yes	Yes	Yes	Yes
	IP Rating	IP65	None	IP65, 66, 67	IP65, 66, 67, 69	IP65, 67
	NSF	None	Yes	Yes	Yes	Yes
	NEMA 4X	None	None	None	Yes	Yes
	Life (@60K hrs)	L89	L91	L91	L91	L92
	Ambient Range	-20C to 40C	-40C to 35C	-40C to 50C	-40C to 40C	-40C to 40C
Emergency	Yes	Yes	Yes	Yes	Yes	
Vandal Resistant	None	Optional	Optional	Optional	Optional	
DLC	Standard	Premium	Premium	Premium	Premium	
INTEGRATED CONTROLS	Basic Occupancy	✓	✓	✓	✓	✓
	Stand Alone Daylight / Occupancy	✓	✓	✓	✓	✓
	WaveLinx	✓		✓		✓
	LumaWatt Pro ³					

Notes: 1. ★★★ = high applicability, ★★ = medium applicability, ★ = low applicability, blank = non-applicable
 2. G=General, W=Wide, P=Parking Garage.
 3. Location data for asset tracking.

Lighting Brands

Ametrix
AtLite
Corelite
Ephesus
Fail-Safe
HALO
HALO Commercial
Invue
iO
Iris
Lumark
LumarkAP
Lumière
McGraw-Edison
Metalux
MWS
NeoRay
Portfolio
PrentaLux - 3D Printed Lighting
RSA
Shaper
Streetworks
Sure-Lites

Controls Brands

Greengate
Fifth Light
Intelligent Lighting Controls

Connected Lighting Systems and Smart Spaces Platform

WaveLinx
Trellix Infrastructure



Cooper Lighting Solutions
1121 Highway 74 South
Peachtree City, GA 30269
P: 770-486-4800
www.cooperlighting.com

Canada Sales
5925 McLaughlin Road
Mississauga, Ontario L5R 1B8
P: 905-501-3000
F: 905-501-3172

© 2024 Cooper Lighting Solutions
All Rights Reserved
Printed in USA
Publication No. BR519040EN-web
August 29, 2024 3:44 PM

Cooper Lighting Solutions is a registered trademark.

All other trademarks are property of their respective owners.

Product availability, specifications, and compliances are subject to change without notice.