

Pepco

Professional Electric
Products Company

A Sonepar Company

"From Substation to Workstation ...
We're Distribution Unleashed!"



LIGHTING SOLUTIONS

Pepco is a value-added distributor and packager of electrical solutions.
We provide a full line of quality products, support personnel and expert services
to meet the electrical needs of our customers in all industries.

pepconet.com

Follow us on:  

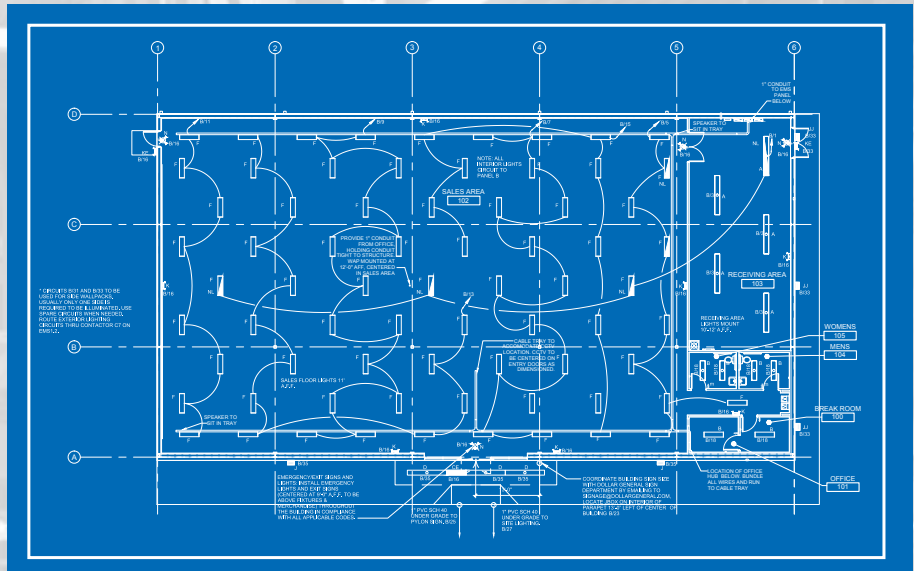
Lighting Division

For over 40 years, Pepco has provided our clients with quality service and detailed lighting solutions. Through our partnerships with leading manufacturers we strive to meet even the most challenging requirements.

Pepco's manufacturing partners facilitate the development, review, and critique of lighting layouts and electrical drawings, while providing specifications and detailed product data sheets to assist in lighting design solutions.

Our knowledgeable and highly trained staff, LC and Controls Certified, will visit your business or jobsite and are capable of conducting Light Level Analysis and Energy Audits. We will analyze your lighting needs in order to understand your expectations and provide you with lighting solutions in a timely, accurate, and professional manner.

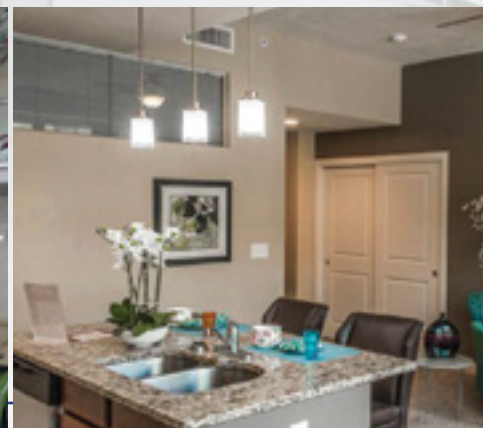
Pepco provides a complete solution for all your electrical needs. Our service-oriented professionals and engineers create and customize a solution to best fit your need, extending critical resources to support your project through successful implementation.



Pepco is part of the Sonepar Group

Sonepar is an independent family-owned company with global market leadership in B-to-B distribution of electrical products, solutions and related services. Through a dense network of 80 brands spanning 40 countries, the Group has an ambitious transformation agenda to become the first global B-to-B electrical distributor to provide a fully digitalized and synchronized omnichannel experience to all customers. Drawing on the skill and passion of its 44,000 associates, Sonepar had sales of \$33.1 billion in 2022.* For more information, visit [sonepar.com](https://www.sonepar.com).

*Figure converted to dollars from €31.416B at 1.054 USD/EUR average rate.

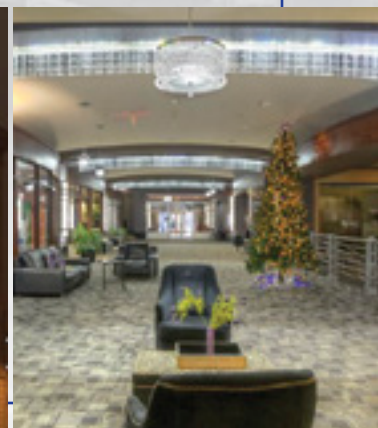
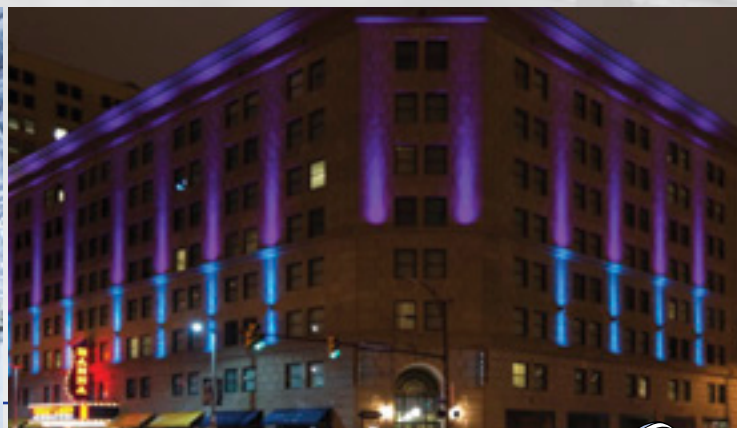


Product and Service Offerings



Our workforce **efficiency** and **productivity** is consistently ranked by *Electrical Wholesaling* magazine in the top 25 distributors in the United States.

- Ballasts
- Light Level Control Systems
- Lamps
- Drivers
- Fixtures - Decorative, Emergency, Industrial, Landscaping, LED, Office, Outdoor, Poles, Security, etc.
- Lumen Level Review based on Application
- Energy Savings Analysis
- Fixture Layout & Design
- Lamp Retrofit & Replacement
- Product Training & CEU Courses





Professional Electric
Products Company

A Sonepar Company

PEPCO EASTLAKE

33210 Lakeland Blvd.
Eastlake, OH 44095
Phone: 440.946.3790
Toll-Free: 800.872.7000

Corporate Mailing Address
P.O. Box 1570
Willoughby, Ohio 44096

PEPCO AKRON

1140 E. Waterloo Rd.
Akron, OH 44306
Phone: 330.535.3790
Toll-Free: 800.410.4844

PEPCO TOLEDO

501 Phillips Ave.
Toledo, OH 43612
Phone: 419.269.3790
Toll-Free: 800.929.3790

PEPCO COLUMBUS

5193 Sinclair Rd.
Columbus, OH 43229
Phone: 614.481.8801
Toll-Free: 800.289.2274

PEPCO ELYRIA

1190 E. Broad St.
Elyria, OH 44035
Toll Free: 800.379.3790

PEPCO WARRENSVILLE HTS.

23209 Miles Rd., Building C
Warrensville Hts., OH 44128
Phone: 216.626.3790

PEPCO WARREN

1230 N. River Rd. NE
Warren, OH 44483
Phone: 330.946.3790